

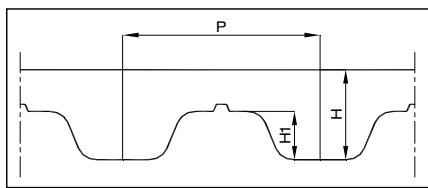
MEGAFLEX - TRULY ENDLESS PU TIMING BELT

MEGAFLEX - 真正无尽头型同步带(聚胺脂)

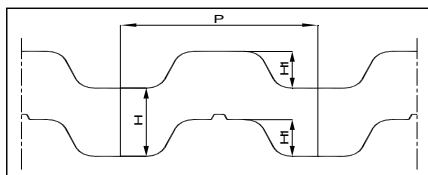
MEGAFLEX endless timing belts are manufactured in polyurethane with continuous steel cord without any joint. This production give excellent performance and is suitable for all power transmission, high speed and severe conveying applications with high loads.

MEGAFLEX 无尽头同步带是由聚胺脂和连贯的无接头钢芯制造而成的。这种生产制造赋予了它优秀的性能并适用于所有的动力传输，高速以及承受高负载搬运等用途。

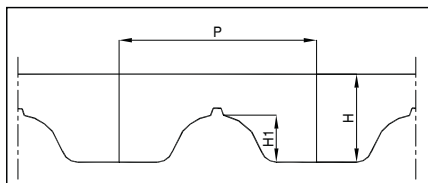
Material: Polyurethane / 材料: 聚胺脂



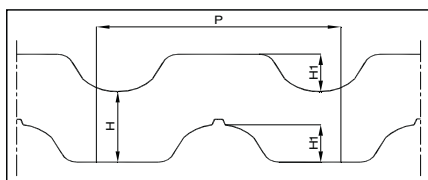
T5 - T10 - T20



T5DL - T10DL - T20DL



AT5 - AT10 - AT20



AT5DL - AT10DL - AT20DL

T5 / T5DL	
Standard width(mm)	标准宽度 (mm)
6	
10	
16	
25	
32	
50	
75	
100	
150	

P	5
---	---

H	2.2
---	-----

H1	1.2
----	-----

T10 / T10DL	
Standard width(mm)	标准宽度 (mm)
10	
16	
25	
32	
50	
75	
100	
150	

P	10
---	----

H	4.5
---	-----

H1	2.5
----	-----

T20 / T20DL	
Standard width(mm)	标准宽度 (mm)
10	
16	
25	
32	
50	
75	
100	
150	

P	20
---	----

H	8.0
---	-----

H1	5.0
----	-----

AT5 / AT5DL	
Standard width(mm)	标准宽度 (mm)
10	
16	
25	
32	
50	
75	
100	
150	

P	5
---	---

H	2.7
---	-----

H1	1.2
----	-----

AT10 / AT10DL	
Standard width(mm)	标准宽度 (mm)
10	
16	
25	
32	
50	
75	
100	
150	

P	10
---	----

H	4.5
---	-----

H1	2.5
----	-----

AT20 / AT20DL	
Standard width(mm)	标准宽度 (mm)
10	
16	
25	
32	
50	
75	
100	
150	

P	20
---	----

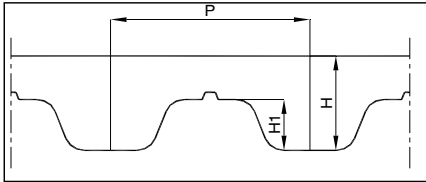
H	8.0
---	-----

H1	5.0
----	-----

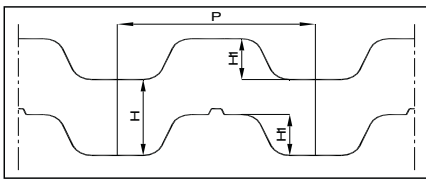
MEGAFLEX - TRULY ENDLESS PU TIMING BELT

MEGAFLEX - 真正无尽头型同步带(聚胺脂)

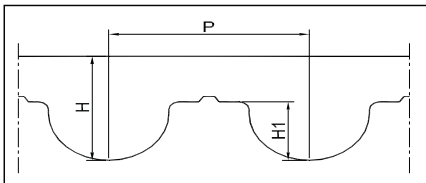
Material: Polyurethane / 材料: 聚胺脂



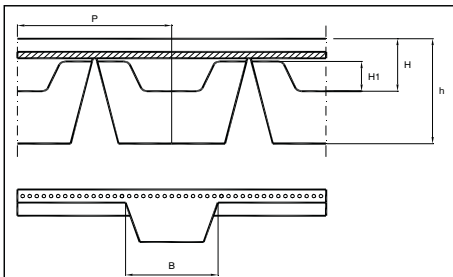
XL - L - H - XH



XLDL - LDL - HDL - XHDL



HTD8M



ATG10

XL / XLDL	
Standard width(mm)	标准宽度 (mm)
19.53	
12.7	
19.1	
25.4	
38.1	
50.8	
76.2	
101.6	
152.4	

L / LDL	
Standard width(mm)	标准宽度 (mm)
19.53	
12.7	
19.1	
25.4	
38.1	
50.8	
76.2	
101.6	
152.4	

H / HDL	
Standard width(mm)	标准宽度 (mm)
19.53	
12.7	
19.1	
25.4	
38.1	
50.8	
76.2	
101.6	
152.4	

XH / XHDL	
Standard width(mm)	标准宽度 (mm)
19.53	
12.7	
19.1	
25.4	
38.1	
50.8	
76.2	
101.6	
152.4	

P	5.0
---	-----

P	9.525
---	-------

P	12.7
---	------

P	22.225
---	--------

H	2.30
---	------

H	3.60
---	------

H	4.30
---	------

H	11.2
---	------

H1	1.27
----	------

H1	1.90
----	------

H1	2.29
----	------

H1	6.35
----	------

HTD8M	
Standard width(mm)	标准宽度 (mm)
10	
16	
25	
32	
50	
75	
100	
150	

ATG 10 K13	
Standard width(mm)	标准宽度 (mm)
10	
16	
25	
32	
50	
75	
100	
150	

P	8
---	---

P	10.0
---	------

H	5.6
---	-----

H	4.5
---	-----

H1	3.4
----	-----

H1	2.5
----	-----

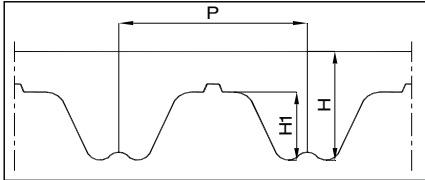
B	13.0
---	------

h	6.5
---	-----

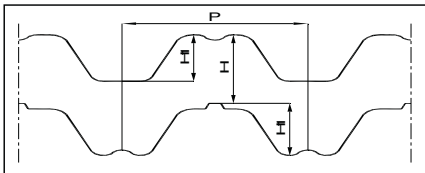
MEGAFLEX - TRULY ENDLESS PU TIMING BELT

MEGAFLEX - 真正无尽头型同步带(聚胺脂)

Material: Polyurethane / 材料: 聚胺脂



RPP 5 - RPP 8 - RPP 14



RPP 5DL - RPP 8DL - RPP 14DL

RPP 5 / RPP 5DL	
Standard width(mm)	标准宽度 (mm)
10	
15	
20	
25	
30	
50	
85	
100	
150	

P	5
---	---

H	3.8
---	-----

H1	2.0
----	-----

RPP 8 / RPP 8DL	
Standard width(mm)	标准宽度 (mm)
10	
15	
20	
25	
30	
50	
85	
100	
150	

P	8
---	---

H	5.4
---	-----

H1	3.2
----	-----

RPP 14 / RPP14DL	
Standard width(mm)	标准宽度 (mm)
10	
15	
20	
25	
40	
50	
55	
85	
100	
150	

P	14
---	----

H	10.0
---	------

H1	6.0
----	-----

MEGAFLEX - TRULY ENDLESS PU TIMING BELT

MEGAFLEX - 真正无尽头型同步带(聚胺脂)

Please refer to the table below for the technical load ratings of each belt series
 每种同步带系列的技术负载比例请参阅下表。

Technical Data / 技术数据

T 5 Series / 系列	
Belt Width 同步带宽 (mm)	Max. Traction Load 最大张力强度 (N)
6	165
10	330
16	595
25	960
32	1,260
50	1,990
75	3,020
100	4,080
150	6,130

T 10 Series / 系列	
Belt Width 同步带宽 (mm)	Max. Traction Load 最大张力强度 (N)
16	1,290
25	2,130
32	2,770
50	4,440
75	6,750
100	9,050
150	13,600

T 20 Series / 系列	
Belt Width 同步带宽 (mm)	Max. Traction Load 最大张力强度 (N)
16	1,980
25	3,330
32	4,380
50	7,500
75	11,500
100	15,300
150	23,800

HTD 8M Series / 系列	
Belt Width 同步带宽 (mm)	Max. Traction Load 最大张力强度 (N)
10	1,220
15	1,950
20	2,920
30	4,390
50	8,050
85	13,900
100	16,600

AT 5 Series / 系列	
Belt Width 同步带宽 (mm)	Max. Traction Load 最大张力强度 (N)
10	640
16	1,100
25	1,820
32	2,350
50	3,950
75	5,750
100	7,600
150	11,500

AT 10 Series / 系列	
Belt Width 同步带宽 (mm)	Max. Traction Load 最大张力强度 (N)
16	1,980
25	3,330
32	4,380
50	7,500
75	11,500
100	15,300
150	23,800

AT 20 Series / 系列	
Belt Width 同步带宽 (mm)	Max. Traction Load 最大张力强度 (N)
25	5,620
32	7,150
50	11,250
75	16,100
100	22,500
150	33,200

ATG 10 Series / 系列	
Belt Width 同步带宽 (mm)	Max. Traction Load 最大张力强度 (N)
150	23,800

XL Series / 系列	
Belt Width 同步带宽 (mm)	Max. Traction Load 最大张力强度 (N)
12.7	420
19.1	670
25.4	910
38.1	1,390
50.8	1,880
76.2	2,850
101.6	3,820
152.4	5,750

L Series / 系列	
Belt Width 同步带宽 (mm)	Max. Traction Load 最大张力强度 (N)
12.7	610
19.1	1,030
25.4	1,430
38.1	2,250
50.8	3,070
76.2	4,710
101.6	6,350
152.4	9,640

H Series / 系列	
Belt Width 同步带宽 (mm)	Max. Traction Load 最大张力强度 (N)
12.7	820
19.1	1,320
25.4	1,800
38.1	2,780
50.8	3,760
76.2	5,720
101.6	7,680
152.4	11,600

XH Series / 系列	
Belt Width 同步带宽 (mm)	Max. Traction Load 最大张力强度 (N)
38.1	5,570
50.8	8,700
76.2	12,100
101.6	17,200
152.4	25,000

RPP 5 Series / 系列	
Belt Width 同步带宽 (mm)	Max. Traction Load 最大张力强度 (N)
10	875
15	1,330
25	2,375
30	2,660
50	4,750
85	8,330
100	9,830
150	14,800

RPP 8 Series / 系列	
Belt Width 同步带宽 (mm)	Max. Traction Load 最大张力强度 (N)
15	2,000
20	3,020
30	4,480
50	7,100
85	12,650
100	13,800
150	23,800

RPP 14 Series / 系列	
Belt Width 同步带宽 (mm)	Max. Traction Load 最大张力强度 (N)
25	6,700
40	12,300
55	16,750
85	28,500
100	33,500
150	51,000

ORDERING EXAMPLE

订购示例

