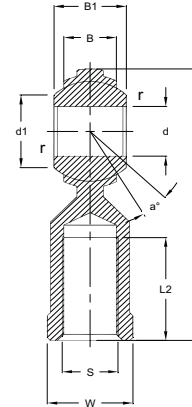
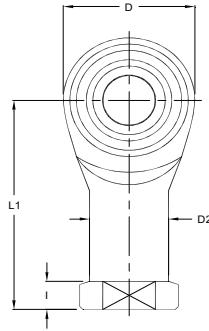


JFT

■ Maintenance-Free (Metric Dimension) / 免维护型 (公制规格)
Female Thread / 内螺纹

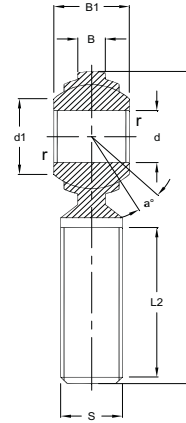
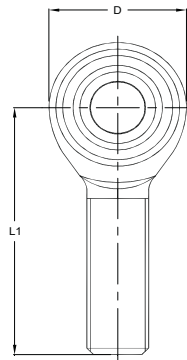


Part No. 编号	Mass 重量 gr.	Dimensions (mm) / 尺寸 (mm)														Tilting angle 偏角 a	Spherical Diameter 球面外径 mm	Basic Static Load Ratings 额定静负载率 Co/Kgf
		d	Threads 螺纹	D	B +0.1 -0.4	B ₁ +0 -0.1	d ₁	L	l	L ₁	L ₂	W +0 -0.2	D ₁	D ₂	r			
JFT 5	16.5	5	M5 x 0.8	16	6	8	7.7	35	4	27	14	9	11	9	0.5	13	11.1	400
JFT 6	25	6	M6 x 1	18	6.75	9	9	39	5	30	14	11	13	10	0.5	13	12.7	510
JFT 8	43	8	M8 x 1.25	23	9	12	10.4	47	5	35.5	17	14	16	12.5	0.5	13	15.87	760
JFT 10	72	10	*M10 x 1.25	27	10.5	14	12.9	56	7	42.5	21	17	19	15	0.5	13	19.05	960
			M10 x 1.5															
JFT 12	107	12	M12 x 1.75	31	12	16	15.8	66	7.5	50.5	24	19	22	17.5	0.5	13	22.5	1,120
JFT 14	160	14	*M14 x 1.5	35	13.5	19	16.9	75	8.5	57.5	27	22	25	20	0.5	15	25.4	1,550
			M14 x 2															
JFT 16	210	16	*M16 x 1.5	39	15	21	19.3	83	8.5	63.5	33	24	27	22	0.5	15	28.5	2,060
			M16 x 2															
JFT 18	295	18	M18 x 1.5	43	16.2	23	21.7	92	10	71.5	36	27	31	25	0.5	15	31.6	2,570
JFT 20	380	20	M20 x 1.5	46	18	25	23.8	101	11	78	40	30	34	27.5	0.5	15	34.5	2,840

- Please denote thread dimension in order sheet for star-marked threaded rod ends in table above.
在您订购上表中带星号杆端轴承时，请在订单上注明螺纹尺寸。

JMT

- Maintenance-Free (Metric Dimension) / 免维护型 (公制规格)
Male Thread / 外螺纹



Part No. 编号	Mass 重量 gr.	Dimensions (mm) / 尺寸 (mm)										Tilting angle 偏角 a	Spherical Diameter 球面外径 mm	Basic Static Load Ratings 额定静负载率 Co/Kgf
		d	Threads 螺纹	D	B +0.1 -0.4	B ₁ +0 -0.1	d ₁	L	L ₁	L ₂	r			
JMT 5	12.5	5	M5 x 0.8	17	6	8	7.7	42	33.5	20	0.5	13	11.1	350
JMT 6	19	6	M6 x 1	18.5	6.75	9	9	46	36.75	22	0.5	13	12.7	500
JMT 8	32	8	M8 x 1.25	23	9	12	10.4	53	41.5	25	0.5	13	15.87	700
JMT 10	54	10	M10 x 1.5	27	10.5	14	12.9	61	47.5	26.5	0.5	13	19.05	960
JMT 12	85	12	M12 x 1.75	31	12	16	15.8	69	53.5	33	0.5	13	22.5	1,120
JMT 14	126	14	M14 x 2	35	13.5	19	16.9	76.5	59	36	0.5	15	25.4	1,550
JMT 16	185	16	M16 x 2	39	15	21	19.3	85	65.5	40	0.5	15	28.5	2,060
JMT 18	260	18	M18 x 1.5	43	16.2	23	21.7	94.5	73	44	0.5	15	31.6	2,570
JMT 20	340	20	M20 x 1.5	46	18	25	23.8	103	80	47	0.5	15	34.5	2,840