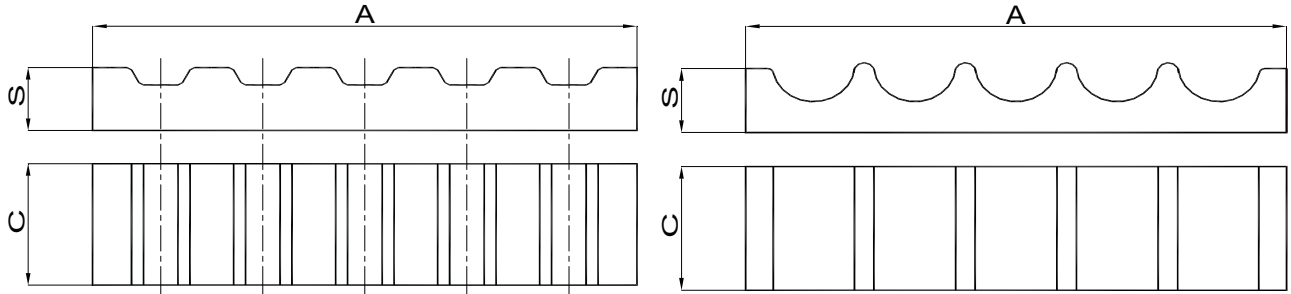


CLAMPING PLATES - FOR OPEN TIMING BELT

夹钳金属板 - 用于开口型同步带



XL - L - H - T5 - T10 - T20 - AT5 - AT10 - AT20 Series / 系列

HTD Series / 系列

Dimensions for **A** and **C** are customized according to drawing.

A和C的尺寸大小由制图定义。

CLAMPING PLATES THICKNESS / 夹钳金属板厚度										
	XL	L	H	T5 ~ AT5	T10 ~ AT10	T20 ~ AT20	HTD 3M	HTD 5M	HTD 8M	HTD 14M
S (mm)	8	15	22	10	10	20	8	8	15	22

The clamping plates are used to clamp the tails of the open belts

夹钳金属板是用来夹住开口同步带尾端的。

On the customers' request, the clamping plates can be customized according to drawings

根据顾客的需求，夹钳金属板可以根据图制定。

As the belt can't be stretched with the clamping plates, we suggest to use other **tension method**

因为同步带不能用夹钳金属板来伸长，我们建议用另外的方法拉紧。

For ordering of the clamping plates, please specify the belt types with attached drawings

要订购夹钳金属板，请附图并说明同步带的类型。