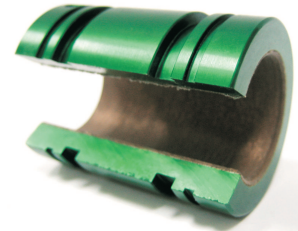
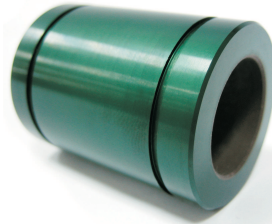
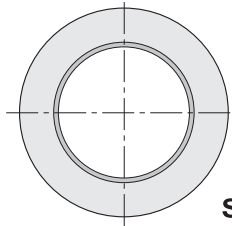
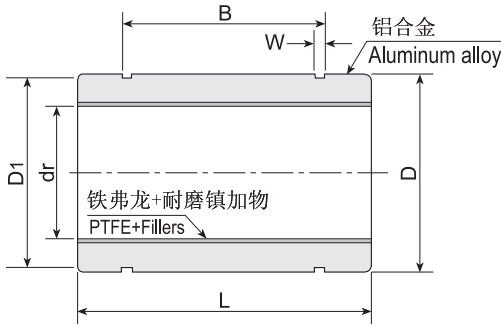


OILLESS BEARING 自润轴承

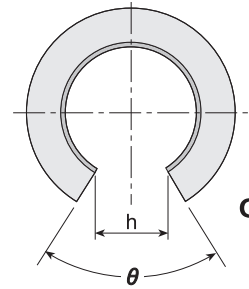


OB

Construction / 构造:
Internal: PTFE + Fillers / 内径: 铁弗龙+耐磨镇加物
External: Aluminum alloy / 外径: 铝合金



Standard type
标准型



OP type
OP 型

Model No. 型号		Main dimensions and tolerance 主要尺寸及公差										Max Static Load 最大荷重 kgf	Max. Speed 最大速度		Weight 重量	
Standard Type 标准型	OP Type OP 型	dr mm 公差 μm	D mm 公差 μm	L mm 公差 μm	B mm 公差 μm	W mm	D1 mm	h mm	θ	Dry 干性 m/min	Lub 润滑剂 m/min		Standard Type g	OP Type g		
OB 6	OB 60P	6	12	19	13.5	1.1	11.5	—	—	120		4	3			
OB 8	OB 80P	8	15	24	11.5	1.1	14.3	—	—	200		8	6			
OB 10	OB 100P	10	19	29	22	1.3	18	6.8	80°	300		15	13			
OB 12	OB 120P	12	21	30	23	1.3	20	8	80°	370		20	15			
OB 13	OB 130P	13	23	32	23	1.3	22	9	80°	430		25	19			
OB 16	OB 160P	16	28	37	26.5	1.6	27	11	80°	620		40	32			
OB 20	OB 200P	20	32	42	30.5	1.6	30.5	11	60°	880		52	45			
OB 25	OB 250P	25	40	59	41	1.85	38	12	50°	1,500	40	120	105			
OB 30	OB 300P	30	45	64	44.5	1.85	43	15	50°	2,000		160	130			
OB 35	OB 350P	35	52	70	49.5	2.1	49	17	50°	2,500		220	190			
OB 40	OB 400P	40	60	80	60.5	2.1	57	20	50°	3,300		350	250			
OB 50	OB 500P	50	80	100	74	2.6	76.5	25	50°	5,200		850	730			
OB 60	OB 600P	60	90	110	85	3.15	86.5	30	50°	6,900		1,100	900			
OB 80	OB 800P	80	120	140	105.5	4.15	116	40	50°	11,500		2,400	2,100			
OB 100	OB 1000P	100	150	175	125.5	4.15	145	50	50°	18,000		4,700	4,000			

Temperature range / 温度范围 : -100~250°C

Recommended fit of the shaft tolerance / 推介轴心公差 : f7 (Ordinary clearance / 一般间隙)

: g6 (Tight clearance / 紧的间隙)