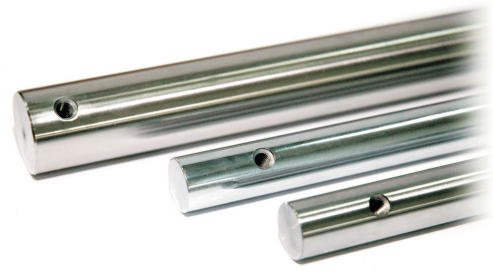


## TAPPED CASE HARDENED SHAFT 外径攻牙硬化轴心



### ▣ SFB / SSFB / SCFB

**SFB** Tapped Case Hardened Shaft  
Material : SUJ2 (high carbon chromium steel)  
Treatment : Induction hardened and ground  
Hardness : HRC 62±2

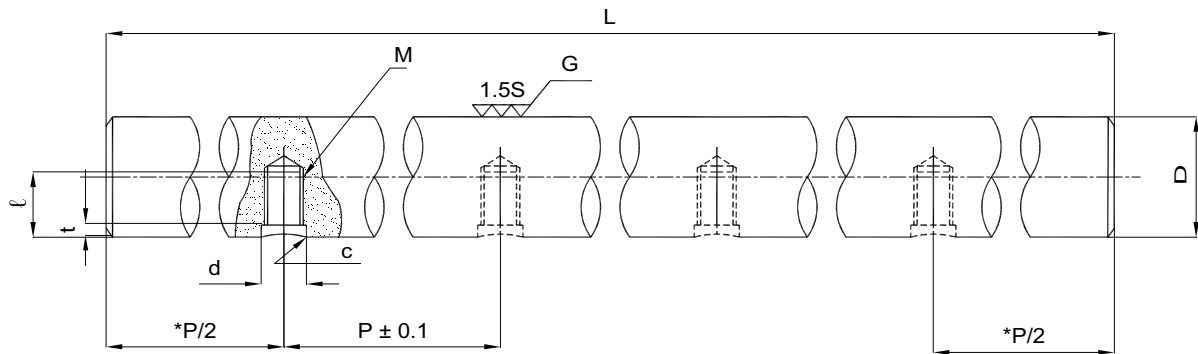
**SSFB** Tapped Stainless Steel Case Hardened Shaft  
Material : SUS440C (martensite stainless steel)  
Treatment : Induction hardened and ground  
Hardness : HRC 58±2

**SCFB** Tapped Case Hardened Chrome Shaft  
Material : SUJ2 (high carbon chromium steel)  
Treatment : Induction hardened, ground chrome plated and polished  
Hardness : HRC 62±2

**SFB** 外径攻牙硬化轴心  
材质 : 轴承钢 (SUJ2)  
处理方式 : 高周波热处理及研磨  
硬度 : HRC 62±2

**SSFB** 不锈钢外径攻牙硬化轴心  
材质 : 不锈钢 (SUS440C)  
处理方式 : 高周波热处理及研磨  
硬度 : HRC 58±2

**SCFB** 外径攻牙硬化铬合金轴心  
材质 : 轴承钢 (SUJ2)  
处理方式 : 高周波热处理, 研磨及表面镀硬熔  
硬度 : HRC 62±2



Unit/单位 : mm

Diameter 外径	Model No. 型号			Diameter Tolerance 外径公差 (g6)	Pitch 孔距	Nominal Screw 螺栓	Thread Depth 螺牙 深度	Counter Bore 沉窝孔	Depth of Counter Bore 沉窝 孔深	Chamfer 倒角	Max Length 最大长度 $L_{(max)}$	Weight 重量
	SFB	SSFB	SCFB									
16	SFB 16	SSFB 16	SCFB 16	-6 ~ -17	150	M5x0.8	9	5.5	2.5	0.7	3600	1.58
20	SFB 20	SSFB 20	SCFB 20	-7 ~ -20	150	M6x1	10	6.5	2.5	0.7	4200	2.47
25	SFB 25	SSFB 25	SCFB 25	-7 ~ -20	200	M6x1	12	6.5	2.5	0.7	4200	3.85
30	SFB 30	SSFB 30	SCFB 30	-7 ~ -20	200	M8x1.25	15	8.5	3.0	1	4200	5.55
35	SFB 35	SSFB 35	SCFB 35	-9 ~ -25	200	M8x1.25	15	8.5	3.0	1	4200	7.55
40	SFB 40	SSFB 40	SCFB 40	-9 ~ -25	300	M8x1.25	18	8.5	3.0	1	4200	9.87

**Example of identification number:**  
辨认型号示例

**SCFB 20 x 1500**

① ② ③

- ① Type
- ② Shaft Diameter (mm)
- ③ Overall length (mm)

- ① 类型
- ② 轴心直径 (mm)
- ③ 总长 (mm)