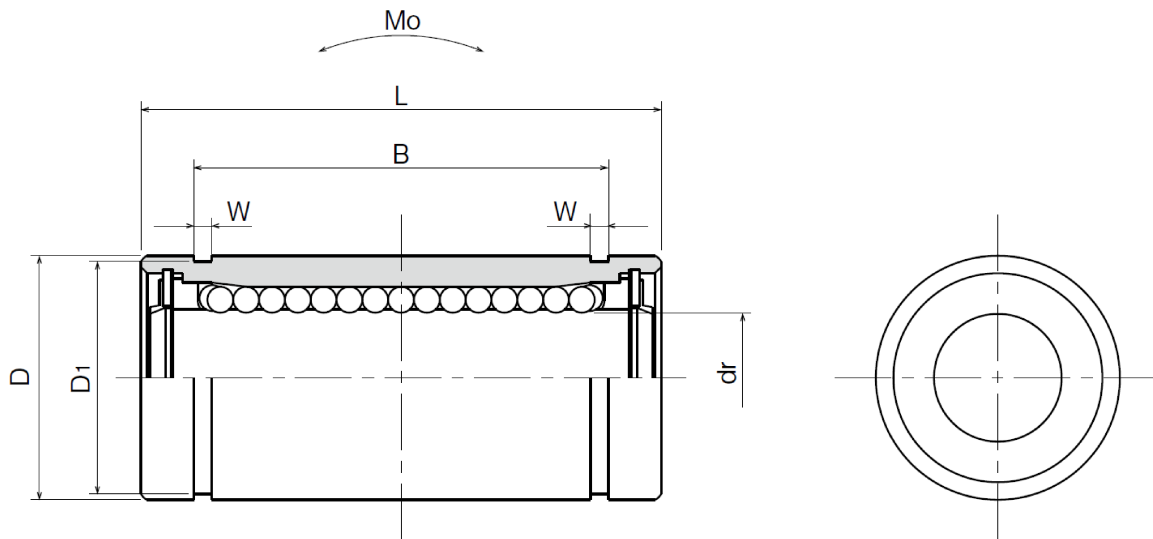


# LINEAR BUSHING

## ◆ Long Type Series (Metric Dimension)



Linear  
Motion

Model Number	Shaft Diameter mm	Ball Circuits	Main dimensions and tolerance										Eccentricity $\mu\text{m}$	Basic Load Rating		Allowable Static Moment $\text{Mo (N.m)}$	Mass g
			dr		D		L		B		W	D <sub>1</sub>		Dynamic C (N)	Static C <sub>0</sub> (N)		
HSM8G-LUU	8	4	8	0 -10	15	0 -13	32	0 -0.3	25.5	0 -0.2	1.1	14.3	15	352	615	1.94	19

seals on both side